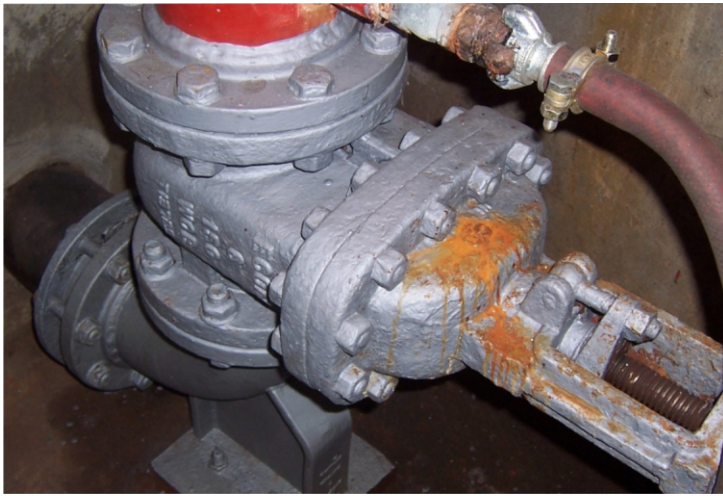


DUBAI DRY DOCKS

The Dubai Dry Docks facility was constructed in 1971 and is one of the leading ship repair yards in the world. It is dedicated to providing a ship repair service of the highest standards. The Company contacted Enviropeel because it was anxious to solve the problem of accelerated corrosion of pipes and flanges caused by the high humidity levels and atmospheric conditions in chambers below ground level.



Before and after of encapsulation using Enviropeel 170.



The previous procedure had been to paint the valves within the chambers every six months which was both costly and inefficient. To solve the problem Dubai Dry Docks was interested to see if Enviropeel could offer a solution, and an application was arranged in November 2005. Since access to the flanges and valves was severely restricted, the ability of the Enviropeel equipment to deal with such difficulties

was also an extremely important factor.

Primary testing on the first flanges so impressed observers with the efficiency of the Enviropeel encapsulation that it was immediately decided to increase the application to include 18 flanges, 5 valves, 5 bends and 5 footplate pipe supports, from the ground up to the top flange.

The trial continued with the first coating applied to the

Technical information, equipment details and safety data sheets are available on our website EnviropeelUSA.com, where there is much more information on Enviropeel anti-corrosion systems.

Contact the EnviropeelUSA office for technical advice and availability in your area.

ENVIROPEELUSA
THERMOPLASTIC ANTI-CORROSION SYSTEMS

1128 South West Street
Indianapolis, Indiana 46225
Tel: +1 317 631-9111 Email: info@enviropeelusa.com
Website: www.enviropeelusa.com

flange valves and bend units on two of the valves. This took approximately 12 kgs of Enviropeel 170 and two hours to complete. Two more valves were coated with Enviropeel within the chamber, and a total of 32 kgs was used to complete the trial.

Conclusion

With bolted steel systems in a hot salt-laden enclosed environment, such as that in the chambers at Dubai Dry Docks, Enviropeel's ability to encapsulate the whole system, keeping out moisture and coating every component in corrosion inhibitors, proved a complete success. Access was achieved, even in the most difficult areas and, once all the chambers have been protected, no further protection should be needed other than for standard repair and maintenance requirements.

Although, for this initial trial, a C8 demonstration unit was used, for greater efficiency the project will be completed with a new C18 unit. With nearly 700 flanges, 80 valves, 40 bends and 200 footplate pipe supports in 40 chambers around the Docks, the new unit's increased capacity will be invaluable, allowing each chamber to be completed in 1.5 days.

Top right: Difficulties of access are graphically demonstrated in this photo of an operator spraying in the bottom of the chamber.

Top left, right and middle: Finished flanges and valves - fully protected with Enviropeel!

Bottom: The completed chamber.

